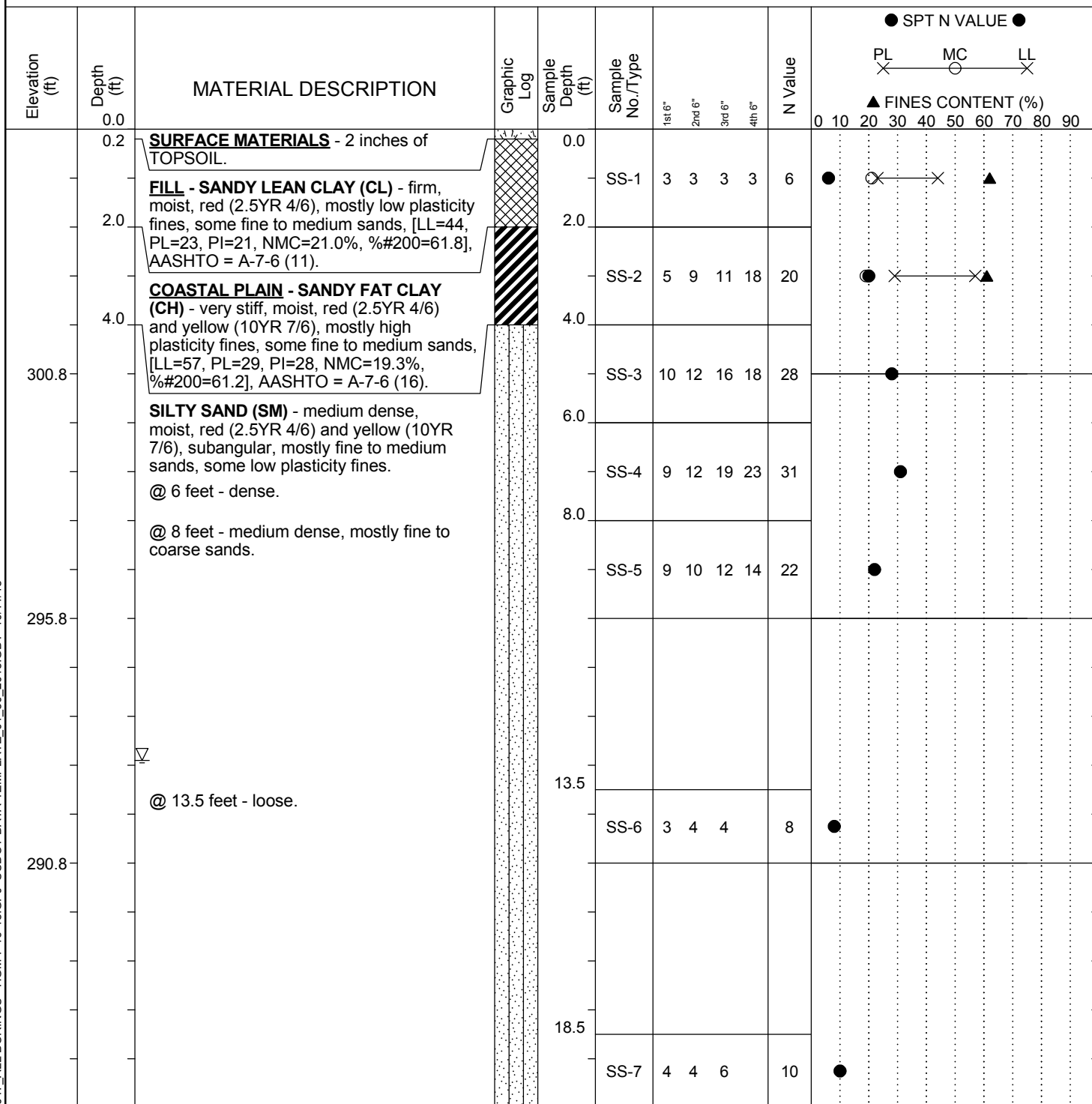


SCDOT Soil Test Log

Project ID:		P027662			County:	Lexington/Richland		Boring No.:	B-56		
Site Description:		Carolina Crossroads I-20/26/126 Corridor Improvement Project						Route:	Site 38		
Eng./Geo.:		AKS	Boring Location:		201+60.83		Offset:	L:183.302'	Alignment:	Proposed	
Elev.:	305.8 ft	Latitude:	34.039615	Longitude:	-81.094676		Date Started:		3/16/2018		
Total Depth:		101.4 ft	Soil Depth:	80.8 ft	Core Depth:	20.6 ft		Date Completed:		3/20/2018	
Bore Hole Diameter (in):		7.5	Sampler Configuration		Liner Required:		Y	(N)	Liner Used:	Y	(N)
Drill Machine:		D-50	Drill Method:	RW		Hammer Type:	Automatic		Energy Ratio:	86.5%	
Core Size:		NQ	Driller:	J. Millwood		Groundwater:	TOB	12.9 ft		24HR	20.7 ft



LEGEND

Continued Next Page

SAMPLER TYPE		DRILLING METHOD	
SS	- Split Spoon	HSA	- Hollow Stem Auger
UD	- Undisturbed Sample	CFA	- Continuous Flight Augers
AWG	- Rock Core, 1-1/8"	DC	- Driving Casing
NQ	- Rock Core, 1-7/8"	RW	- Rotary Wash
CU	- Cuttings	RC	- Rock Core
CT	- Continuous Tube		